

# Integra

SECURITY MANAGEMENT SYSTEM



**RBH**  
**ACCESS**

Building Security Worldwide

# SECURED

Integra stands up to the challenge of bringing together different aspects of security management.



# AUTOMATED

Customize the automation of alarms, locks, reports and more with Integra.



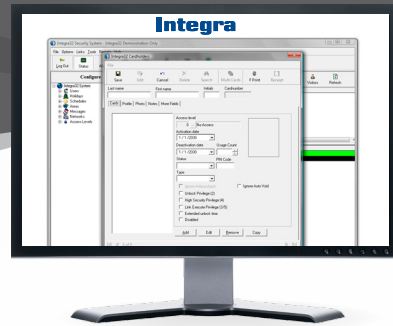
# INSIGHTFUL

Alarm Monitoring with Video, Biometric Authentication, Visitor Management and more.



# EXPANDABLE

Integra can be the ideal solution for a small office or a multi-site corporation, and when it is time to upgrade the transition can be seamless.



## HIGH SECURITY MODE

Dynamically suspend and re-instate access privileges for regular cardholders while maintaining access for specially authorized cards. This mode can be activated by a "Four Swipe", system link, or an operator command from any Security Workstation.

## ANTI-PASSBACK

Global and local anti-passback supports soft or hard enforcement and anti-tailgating. This feature also includes scheduled area reset, live status monitoring and timed anti-passback.

## FIRST PERSON DELAY

Doors on an automatic unlock schedule will only unlock after the first person with valid ID enters for the day.

## MAN TRAP / AIR LOCK / SALLY PORT

A collection of doors where one door of a mantrap cannot be unlocked and opened until the opposite door has been closed and locked, or the person had been identified and approved.

## MULTIPLE DOOR ALARMS

Forced entry, door held open, access denied, and panic alarms are available for each access point.

## GLOBAL LINK COMMANDS

Turn on lights and HVAC or arm and disarm an alarm system all with a simple swipe of a card. Global link commands allows building automation with unlimited possibilities.

## MULTI SWIPE FUNCTIONALITY



### 2-Swipe

Locks/Unlocks Door

### 4-Swipe

Door's High Security On/Off

### 3 & 5-Card Swipe

Custom Actions

## ELEVATOR/LIFT CONTROL

Integra provides an inexpensive, simple way to automate access of up to 32 floors per controller.

## SCHEDULED LOCK AND UNLOCK

Doors can lock and unlock on multiple pre programmed schedules with safeguards such as first person delay.

## EMAILING ALARMS

Allows any system event such as forced entry, door held open, access denied, or even panic alarm to be sent to a desired standard email account on a schedule or in real time.

## VISITOR MANAGEMENT

Identify, record, and track visitors within the establishment. Issue temporary IDs, record photos and track their whereabouts.

## PHOTO-ID & BADGING

A fully integrated Photo ID module is designed to provide an easy to use and powerful tool for creating high quality personalized credentials.

## VMS INTEGRATION

Integrate video with the most popular brands of VMS systems supported. Video can be brought up on alarms, or requests to enter/exit to allow greater visibility.

## BROWSER AND MOBILE SUPPORT

Configuring the Web Server on the Integra system, will allow operators to control and administer the security system via a web browser or mobile phone.



## INTEGRATED BIOMETRIC SUPPORT

Integra makes use of biometric methods of user identification and verification even more convenient by integrating fingerprint enrollment into the cardholder management screen.

## MULTIPLE SITE MANAGEMENT

Control an unlimited number of sites from a single location with individual databases, graphics and history segregation.

## ADVANCED CLIENT-SERVER DESIGN

Includes 10 simultaneous full function clients over LAN/WAN.

## EXPANDABLE TO 128 DOORS

Integra comes with the ability to control 64 doors, but if more is needed, it is possible to expand to 128 doors.

## FIELD UPGRADEABLE TO ENTERPRISE

Integra can grow with you. The controllers are upgradeable to Axiom with a simple, in place firmware upgrade.



Learn more by visiting  
[RBH-Access.com](http://RBH-Access.com)



HARDWARE COMPARISON					
	IRC-2000 SERIES Intelligent Controllers	URC-2000 SERIES Universal Controllers	URC-2008 Elevator Controller	UNC-100 Universal Network Controller	UNC-100 Universal PoE Network Controller
Panels per Network :	16				
Local PC & Remote Communications :	Supervised RS-232, RS-485 and TCP/IP (via LIF200)	Supervised RS-485 and TCP/IP (via LIF200)		Supervised RS-485 and TCP/IP	
Communication Between Controllers :	Supervised RS-485				
Speed :	Programmable 9.6 - 56Kbps				
Distance :	4,000ft (1,200m)				
Type :	18AWG, 2 conductor, twisted, shielded				
Cards per Panel :	5,000 expandable to 8,000 (up to 10 digit card no's)	3,000 (up to 10 digit card no's)		8,000 (up to 10 digit card no's)	
Access Levels per Panel :	5,000 expandable to 8,000 (one per card per panel)	3,000 (one per card per panel)		8,000 (one per card per panel)	
Site Codes per Panel :	10 (site code programming is not mandatory)				
Off-Line Transactions Buffer :	3,000 FIFO, command, and alarm priority				
Access Points (Readers/Keypads) :	2 with LED and Buzzer control				
Distance :	Max 500ft (150m)				
Type :	20 - 22AWG, 6 or 8 conductor, stranded, shielded				
Simultaneous Card Formats per Panel :	5, Wiegand or Clock & Data			5, Wiegand	
Programmable Supervised Inputs :	8		4		
Input Supervision :	4 state monitoring (1 or 2 resistors)		4 state monitoring (1 or 2 resistors)		
Distance :	Max 1,000ft (300m)		Max 1,000ft (300m)		
Cable Type :	20 - 22AWG, 2 conductor		20 - 22AWG, 2 conductor		
Programmable Outputs :	4 SPDT 5A @ 30VDC, dry contacts		2 SPDT 5A @ 30VDC, dry contacts		
Output mode :	4 Electronic drivers, 12VDC max, 100mA Programmable Fail Safe/ Fail Secure		2 Electronic drivers, 12VDC max, 100mA Programmable Fail Safe/Fail Secure		
Power Requirements :	16.5VAC, 40VA transformer (PCB Only: 2A @ 13.8VDC)			16.5VAC, 40VA transformer (PCB Only: 2A @ 13.8VDC)	Native PoE IEEE 802.3af or IEEE 802.3at
Auxiliary Power Output :	NA				500mA @ 12-14VDC
Recommended Back-up Battery :	12V, 7AH lead acid or gel cell				

Our unified hardware platform is field configurable to work with any RBH software platform.



RBH-INT-UNC100



RBH-URC-2004



RBH-URC-2005



RBH-IOC8



RBH-EXITRDR



PROXIMITY



iCLASS



VIRTUAL



MIFARE



BIOMETRIC



Learn more by visiting

[RBH-Access.com](http://RBH-Access.com)